

CLEANER FUEL FOR CLEANER AIR

A high-speed photograph of a single drop of liquid falling into a pool of liquid, creating a series of concentric ripples. The liquid is a vibrant green color, and the background is a solid, lighter green. The drop is captured mid-fall, just above the point of impact, with a small splash visible below it.

Using Shell GTL Fuel isn't just better
for business – it's better for everyone

Now available
with **Carbon Offsets**



Shell
GTL Fuel



**GAS
TO
LIQUID**

WHAT IS SHELL GTL FUEL?

Shell GTL (Gas-To-Liquid) Fuel is a cleaner burning diesel alternative fuel to conventional diesel that can be used in both on road and off road applications.

Clear, bright, and almost water-like in appearance, Shell GTL Fuel produces no characteristic 'diesel' odour due to a lack of sulphur and aromatics.

Shell GTL Fuel is part of the paraffinic family of fuels and complies with EN15940 standards. A synthetic fuel produced from natural gas using the Fischer-Tropsch process, its improved combustion properties help to reduce emissions of regulated pollutants and improve local air quality.



Now
available with
**Carbon
Offsets**

CHANGE FUEL FUEL CHANGE

Only with Certas Energy.



Shell GTL Fuel is exclusively supplied in the UK by Certas Energy. With a fleet of 900 tankers operating from 130 local depots, together with a growing network of GTL availability at our bunkersites, we're here to deliver all the benefits of this cleaner burning diesel alternative straight to your business. So you can enjoy safer handling, lower emission and reduced noise – just by filling up your tank, vehicle or machinery.

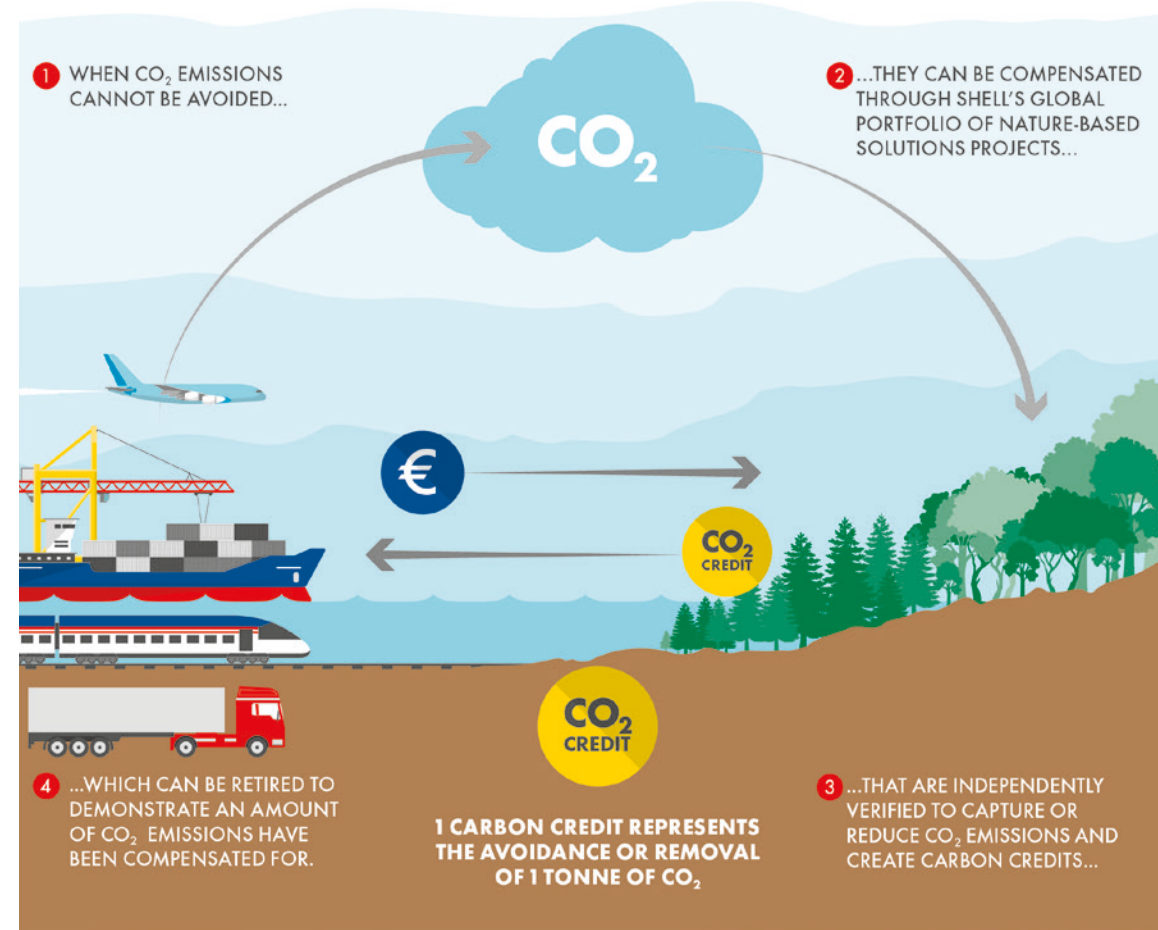
OFFSET UNAVOIDABLE CO₂ EMISSIONS

by taking the additional option of Shell GTL Fuel with carbon offsets to reduce your carbon footprint.

The path towards zero CO₂ emissions is a core part of many organisations' environmental and operating strategies. Carbon offsetting helps compensate for the residual emissions that cannot be reduced through other carbon reduction activities, such as promoting energy efficiency or utilising renewables.

COMPENSATE YOUR CO₂ EMISSIONS

How it works...



THE PROJECTS

NATURE BASED SOLUTIONS

To help reduce and offset CO₂ emissions, Shell works with nature-based projects around the world. These projects also help to improve the livelihoods of local communities, preserve biodiversity, and protect wildlife. All projects are verified by independent organisations with the highest internationally-recognised standards.

CORDILLERA AZUL NATIONAL PARK REDD+ PROJECT

- Protects 1.6 million hectares of forest
- National park between the Andes and the Amazon Basin in Peru
- Will offset the emission of 16.2 million tonnes of CO₂ by 2021

KATINGAN MENTAYA PROJECT

- This project protects 157,000 hectares of peatland habitats in Central Kalimantan, Indonesia
- Home to several critically endangered species, including up to 10% of the surviving Bornean orangutans, southern Bornean gibbons and proboscis monkeys
- Generates around 7.5 million carbon credits each year

GREEN TREES

- USA reforestation project
- Has planted over 42 million trees on 120,000 acres
- Produced over a million tonnes of carbon credits each year
- Helps to restore species habitat, provide cleaner water and support economies

OTHER STRATEGIC COLLABORATIONS

- Shell and Staatsbosbeheer, the Dutch National Forestry Department, will plant more than 5 million trees in the Netherlands over the next 12 years, with Shell investing €17.4 million
- Agreement with Land Life Company to create a 300-hectare reforestation project in Spain. Around 300,000 trees will be planted in the Castilla y Leon region by the end of 2019

Talk with your Certas Energy Team to discuss the ease of offsetting your carbon emissions with your Shell GTL Fuel orders.

WHY CHANGE NOW?

Change to a cleaner burning alternative today as part of transitioning to a low emission future.

REDUCTION IN HARMFUL EMISSIONS

Breathing in polluted air is known to have potential links to health problems, including respiratory illnesses. Air pollution is a key concern for those working around engines and communities affected by poor air quality.

One of the major benefits of using Shell GTL Fuel is the reduction in emissions of regulated pollutants:

- **Nitrogen oxides (NO_x)**
- **Particulate matter (PM)**
- **Carbon monoxide (CO)**
- **Hydrocarbons (HC)**

Independent testing as well as Shell trials have shown that, depending on the application, NO_x emissions can be reduced by up to **37%**, whilst PM emissions can be reduced by up to **50%**.

NO_x emissions



PM emissions



THE BENEFITS

DROP IN AND GO

The fuel can be used as a direct replacement for conventional diesel fuels in heavy-duty and light-duty engines. So there's no need for engine modifications, new infrastructure or vehicle investment.

BIODEGRADABLE AND NON-TOXIC

Shell GTL Fuel is proven to be less harmful to the environment, with tests showing that it can be classified as 'readily biodegradable' and non-toxic. In fact, Shell GTL Fuel was not detectable in soil 51 days after being introduced. The fuel is also more benign to human health than conventional diesel – it is harmless if inhaled and poses a low risk of eye irritation and skin damage.

REDUCED NOISE POLLUTION

Getting too loud? Noise levels in some engines can be reduced by 1-4 dB with Shell GTL Fuel's more uniform combustion. The high cetane number of the fuel shortens the ignition delay, reducing diesel knock intensity and combustion noise in both heavy-duty and light-duty diesel engines.

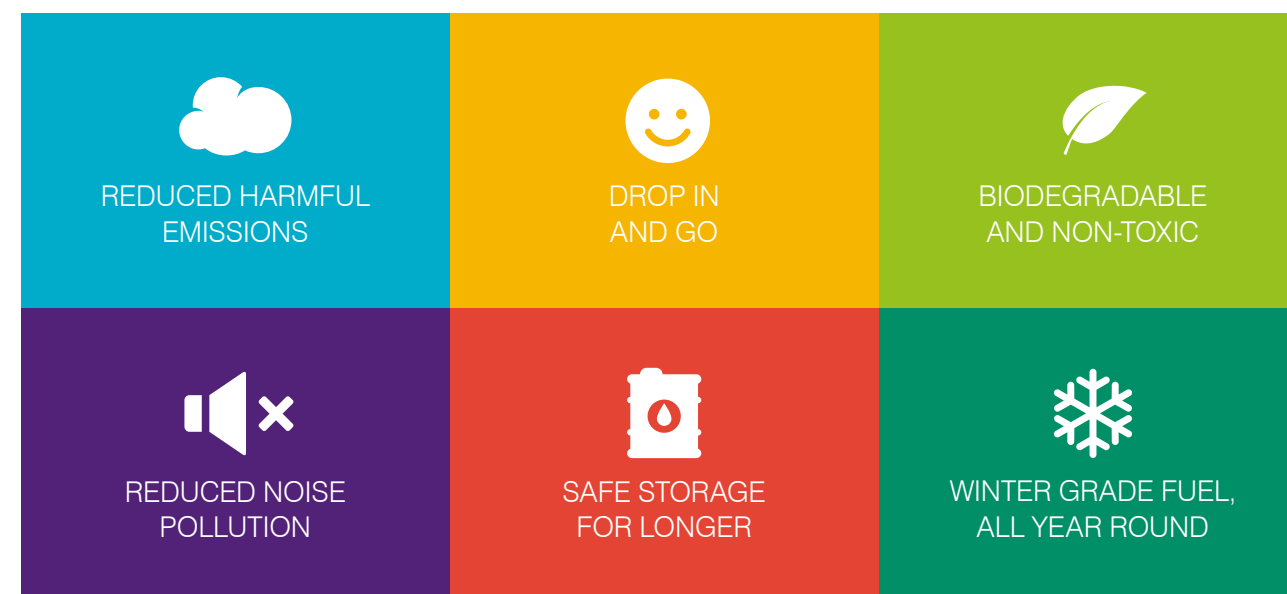
STORE SAFER, FOR LONGER

With no bio content and a CFPP below -20°C, Shell GTL Fuel has a longer shelf life than conventional diesel. It also offers safer handling and storage characteristics due to a higher flash point.

WINTER GRADE FUEL, ALL YEAR ROUND

Shell GTL Fuel has excellent low temperature performance, with a low cloud point and improved cold start performance due to the high cetane number.

THE BENEFITS:



GAIN THE LEAD

Since 2016, Certas Energy has been the exclusive supplier of Shell GTL Fuel in the UK. We have worked in close partnership with many organisations across multiple commercial sectors to educate, support and deliver an alternative to diesel that lowers emissions and improves air quality.

WHO IS FUELLING CHANGE IN THE UK?



ON ROAD



BRAKES

- **Nine-month evaluation sees significant air quality and operational benefits**
- **Independent testing at Millbrook confirms 47% reduction in NOx emissions**
- **Use of Shell GTL Fuel improves uptime by cutting static DPF regeneration**
- **Trials also show quieter running and odour-free refuelling**

"The trial of Shell GTL Fuel at our Park Royal depot has been running really well, the feedback from the drivers has been overwhelmingly positive – the vehicles are running more quietly and we've seen a substantial reduction in the need to clean the particulate filters. Analysis at Millbrook testing centre has come back clearly showing that running Shell GTL Fuel in a city centre has a big impact on NOx emissions – indeed, our own test saw a 47% reduction compared to running on diesel."

Steve Webster, Head of Indirect Goods and Services Procurement at Brakes



GO PLANT FLEET SERVICES

- **Fuelling heavy duty Johnston 651 and 652 road sweepers**
- **Operating in London and Birmingham city centres**

"We've looked in depth at the potential of electric and hydrogen vehicles, but the truth is neither the technology nor the infrastructure is really there yet for heavy duty road sweepers. It's fuel that can be used with our existing vehicles and we're confident it can help us to future-proof our fleet."

Phil Quelch, National Fleet Engineering Director at Go Plant Fleet Services



BEDFORD BOROUGH COUNCIL

- **Supporting the journey to lower fleet emissions**

"This change to Gas-to-Liquid fuel helps our fleet to run more efficiently and produce fewer emissions, and so have a positive impact on our local environment."

Dave Hodgson, Mayor of Bedford Borough





OFF ROAD

MURPHY GROUP

- First UK construction company to use Shell GTL Fuel
- Fuelling a project diverting two existing high pressure gas pipelines at a High Speed 2 (HS2) railway site in Harefield, West London

"We're extremely proud to be the first in the UK construction industry to use Shell GTL Fuel. This is a huge step towards helping to reduce the impact of engineering and construction works on the environment, and demonstrates the ongoing commitment Murphy has for delivering safely, reliably and sustainability."

John Murphy, CEO at J. Murphy & Sons Ltd



JACKSON CIVIL ENGINEERING

- Fuelling plant on Phase 2 of the Environment Agency's Perry Barr & Witton Flood Risk Management Scheme in Birmingham

"The Perry Barr and Witton scheme offers a unique opportunity to introduce alternative fuels to reduce on-site emissions and with Birmingham's active consultation on the new Clean Air Zone proposed for 2020, we felt this was the perfect site for the trial."

Andy Lusher, Services Manager at Jackson Civil Engineering



MORGAN SINDALL

- Powering plant machinery on infrastructure projects and construction sites across the UK

"Protecting local communities, our workforce and improving the environment is central to our values which is why we've worked closely with Certas Energy to realise our first delivery of Shell GTL Fuel to further reduce our on-site emissions. Shell GTL Fuel is an innovative solution that can make an immediate difference and we look forward to continuing to work together with Certas Energy to help improve local air quality and deliver benefits to our workforce and the communities we work in."

Graham Edgell, Director of Sustainability and Procurement at Morgan Sindall Group



HARWICH HAVEN COMMERCIAL PORT

- Transitioned entire fleet from marine gas oil to realise emissions and environmental benefits of cleaner burning fuel

"As overseers of one of the UK's largest commercial ports, we have a responsibility to protect and conserve the marine environment. Shell GTL Fuel has helped us to lessen our environmental impact. We worked closely with Certas Energy to ensure a smooth transition, and the team has supported us every step of the way."

Brian Hill, Marine Engineering Manager at Harwich Haven Authority

Harwich
Haven
Authority

PRINCESS YACHTS

- Fuelling luxury Princess yachts for the London Boat Show

"Protecting the marine environment is an important priority for Princess Yachts and by working with Certas Energy we've been able to enjoy the environmental benefits of the fuel and we hope to continue to use it in the future."

Paul Bailey, Commercial and Technical Manager at Princess Motor Yacht Sales

PRINCESS

SANDWICH RIVERBOAT TOURS

- Lowering emissions along the River Stour's sites of special scientific interest

"I noticed this on my first oil change, usually the oil is black by week one, but since using Shell GTL Fuel it's not until week three the oil is starting to blacken."

Captain Colin Carr, Owner-Operator at Sandwich Riverboat Tours





REVOLUTIONARY WIRELESS TELEMATICS

Lowering emissions – reducing costs



Did you know that preventing an excavator from idling for just one hour a day is equivalent to removing a car from the road for a full year?



MACHINEMAX

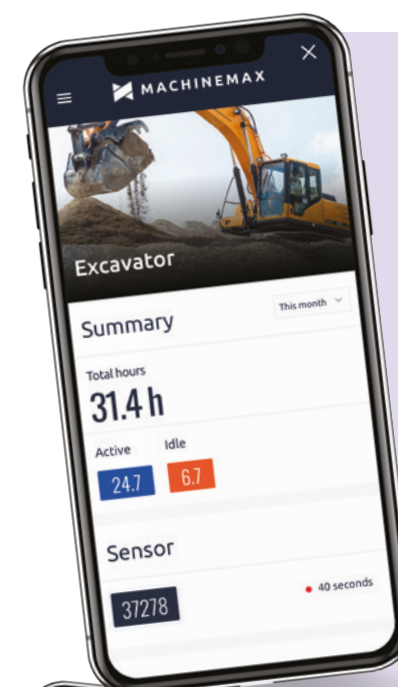
REDUCING THE COST OF RUNNING YOUR OFF ROAD FLEET

Idle times are the single biggest source of inefficiency on most sites and a major contributor to harmful emissions.

Typically, there are three core reasons for idling: sheer habit, poor behaviour, or poor operations. Equipment idling is unavoidable, but it's not unmanageable. Meeting the tougher emission standards of today – and the more stringent ones inevitable in the future – depends on eliminating unnecessary idling wherever possible.

Through self-powered, internet-connected sensors that easily attach to any piece of heavy equipment, MachineMax can reduce machine idling to reduce cost and maximise profit.

The sensors transmit real-time data that highlights when a machine is idling or operational to equipment managers. If equipment is idling for too long, it's immediately apparent, so managers can act quickly to solve the problem and significantly reduce emissions in the process.



TAKE CONTROL OF YOUR FLEET

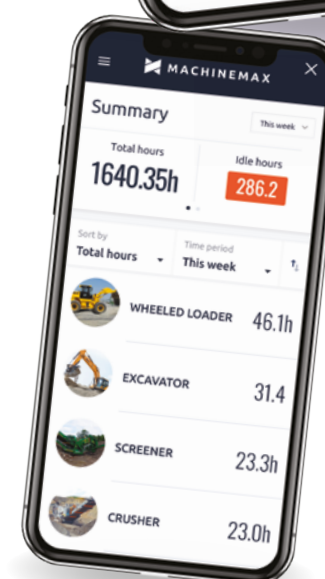
Get a live report of any machine, owned or rented. See if it's on, off or idling. Finish projects on time with minimal overrun costs.

CUT FUEL AND RENTAL COSTS

With a clear view of machine activity, you can reduce idling and stop wasting fuel. Make the most of your existing fleet, avoid buying or renting new machines.

SET UP IN 1 MINUTE

Using a military grade magnet, the wireless sensor attaches in seconds and set-up takes just one minute - no wires and no engineers.



Certas Energy is the UK's exclusive supplier of MachineMax

Talk to your Certas Energy Team today to discuss your options and reduce emissions in off road fleet, through both cleaner burning fuel and wireless telematics.

Call: 0345 600 4040

Email: getintouch@certasenergy.co.uk





Ready to fuel change with Shell GTL Fuel in your operations?

Call: 0345 600 4040

Email: getintouch@certasenergy.co.uk

Visit: certasenergy.co.uk/shell-gtl-fuel



N901 - 22/08/19

Exclusive UK supplier of Shell GTL Fuel



Shell
GTL Fuel